

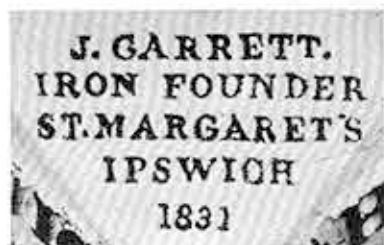


MILESTONES IN IPSWICH

THE milestones surviving in Ipswich are mostly over 150 years old and are a reminder of the days of the turnpike trusts, which were established mainly in the eighteenth century under individual Acts of Parliament to improve and maintain main roads.

Separate trusts in the Ipswich area were responsible for the roads leading to Great Yarmouth, Claydon, Stratford St. Mary, and Helmingham and so on. They were empowered to collect tolls for which purpose toll houses and toll gates were erected.

A map made by the Bailiffs and other members of the Corporation in 1812 shows clearly a milestone at the Mulberry Tree corner. This is milestone 69 set against the front of the Mulberry Tree Public House. It is of cast iron and bears no date and was clearly re-sited when the present public house was built.



Jacob Garrett's Trade Mark

Milestone 70 opposite the Convent in Woodbridge Road is one of a series of cast iron milestones set up as facings to the earlier stones by the Ipswich-Southtown (Great Yarmouth) Turnpike Trust in 1818. This trust was established by Act of Parliament in 1785. The Surveyor to the trust recommended that all the milestones between Ipswich and Great Yarmouth should be faced in this way. The castings were made by Jacob Garrett of Ipswich whose foundry in St. Margarets parish was probably at the corner of St. Margarets Green and Cobbold Street.

A similar milestone is found on Woodbridge Road East near the Colchester Road roundabout. This milestone has been repaired in recent years and was formerly sited opposite the old workhouse.

On London Road, not far from the junction with Victoria Street is milestone 68, the date on the casting is 1831 and it again bears Jacob Garrett's trade mark. Travellers to London no longer use this road since traffic was diverted to Handford Road when Civic Drive was opened.

At the top of Crane Hill near the entrance to Chantry Park is milestone 67, which was cast in Ipswich by E. R. & F. Turner in 1862. This was re-erected when this section of London Road was

widened to a dual carriageway.

At the junction of Norwich Road and Chevallier Street a milestone of similar pattern to the others bears the inscription "St. Matthews Parish, Bury 25 miles, Ipswich 1 mile". This has been damaged and repaired in the past and was restored and re-erected recently when this busy junction was improved.

One surviving old milestone is one mile along Norwich Road. It is square and about two feet high, and although the inscription is now indecipherable it is likely to have been one of a series erected by the Ipswich-Claydon Turnpike Trust set up in 1711.

Highway authorities no longer have a statutory duty to maintain milestones, but it is hoped that, as in Ipswich, growing awareness of the past will ensure the continued survival of these interesting and ancient items of street furniture.