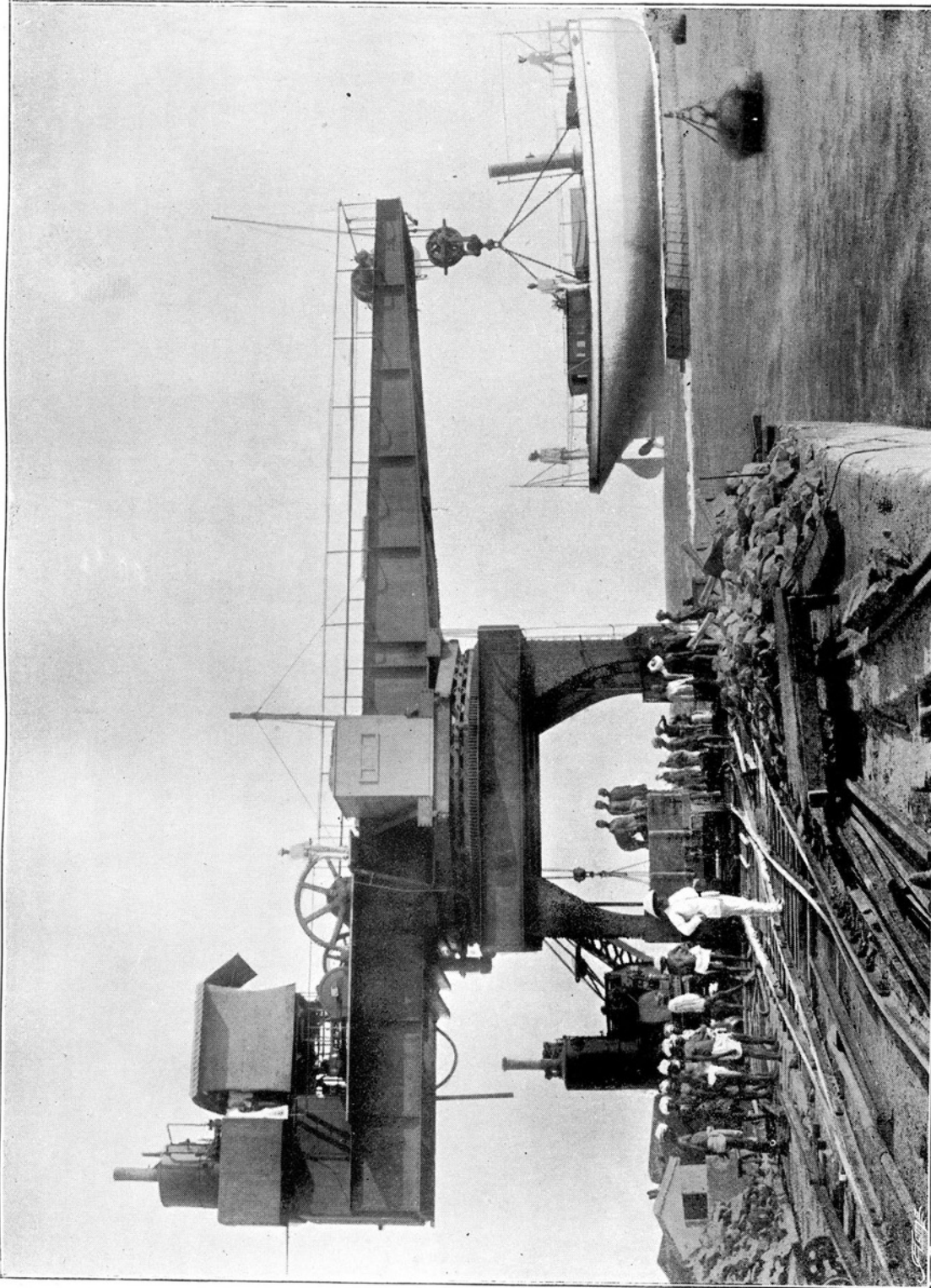


Excerpts from Smith's (wire rope manufacturers of Newcastle-on-Tyne) catalogue c.1896-1901 showing their products from around the world; courtesy of Ipswich roping expert Des Pawson. Thanks from Ipswich Historic Lettering website.

# THOMAS & WILLIAM SMITH.

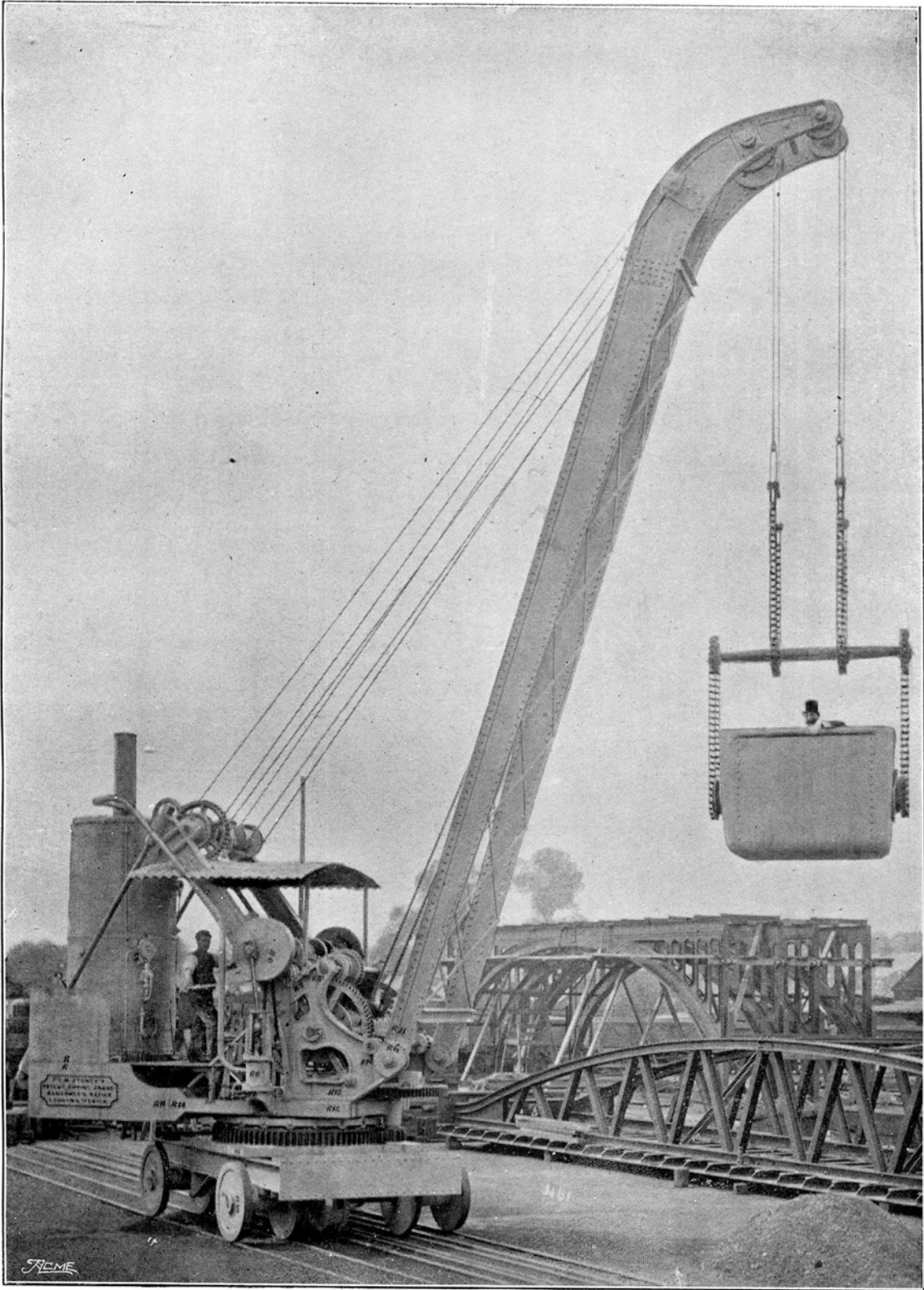


All Round Titan Crane, built by Messrs. Ransomes & Rapier, of Ipswich, for the Madras Harbour Works.  
Fitted with THOS. & WM. SMITH'S "F" make Steel Wire Ropes

St. Lawrence Ropery, Newcastle-on-Tyne.

Excerpts from Smith's (wire rope manufacturers of Newcastle-on-Tyne) catalogue c.1896-1901 showing their products from around the world; courtesy of Ipswich roping expert Des Pawson. Thanks from Ipswich Historic Lettering website.

## THOMAS & WILLIAM SMITH.



STONE'S PATENT TIPPING CRANE,  
as supplied by Ransomes & Rapier to the Manchester Ship Canal Co.  
Fitted with THOS. & WM. SMITH'S "F" make Steel Wire Rope.

St. Lawrence Ropery, Newcastle-on-Tyne.

Excerpts from Smith's (wire rope manufacturers of Newcastle-on-Tyne) catalogue c.1896-1901 showing their products from around the world; courtesy of Ipswich roping expert Des Pawson. Thanks from Ipswich Historic Lettering website.

# THOMAS & WILLIAM SMITH.



37 ton Crane built by Ransomes & Rapier, Ipswich, for the Great Eastern Railway Co.  
Special Flexible Steel Wire Ropes supplied by THOS. & WM. SMITH.  
(See opposite page.)

St. Lawrence Ropery, Newcastle-on-Tyne.



# THOMAS & WILLIAM SMITH.

## DESCRIPTION OF 37 TON CRANE BUILT FOR THE GREAT EASTERN RAILWAY COMPANY.

---

**T**HE Crane illustrated was made by Messrs. Ransomes & Rapier, of London and Ipswich, for the Great Eastern Railway Company, for use on their Parkeston Quay, in dealing with the heavy goods of their Continental traffic, and was fitted with galvanized steel wire ropes supplied by us.

The Crane, as will be seen, is mounted on twelve wheels, each provided with springs, so as to equalize, as far as possible, the pressure on the quay.

The Crane has a variable radius, the jib being actuated entirely by galvanized steel wire ropes.

The load is also lifted by a steel wire rope, arranged as four parts, winding two on a turned grooved barrel.

The Crane has a maximum radius of 36 ft., and was tested at this radius with 37 tons, when it lifted, turned, and travelled with the greatest ease.

The carriage is arranged so as to allow trucks to pass underneath.

The superstructure is mounted on a live ring of rollers, and the turning and travelling gears are fitted with spring drivers for reducing the sudden shocks on the gear, of which Messrs. Ransomes & Rapier make a speciality.

---

RANSOMES & RAPIER, ENGINEERS AND IRONFOUNDERS,

WATERSIDE IRON WORKS,

IPSWICH, *November 26th, 1892.*

GENTLEMEN,

Confirming our letter of 22nd inst., and in further reply to your favour of the 11th,—we are glad to be able to state we have used your Steel Wire Ropes for several years past, and we have never had a failure with one of them. The Ropes have given satisfaction everywhere, and we have used them on Steam and Hand Cranes in our own works with the greatest success.

The Ropes are manufactured of steel wire of excellent quality and are well finished.

We enclose photographs of two out of the many various types of Cranes upon which we have used your Wire Ropes, and shall be glad to forward you wood blocks of same if they would suit your catalogue.

We are, yours faithfully,

*per pro* RANSOMES & RAPIER,

A. A. BENNETT.

Messrs. THOS. & WM. SMITH,

Queen Street, Newcastle-on-Tyne.

St. Lawrence Ropery, Newcastle-on-Tyne.